

Presentation of the system



SKY Implant system - Titanium

3. Edition

Dear practice team / Dear laboratory team,



The bredent Group supplies dentists and dental technicians with perfectly matched dental and dental-technical materials as consistent and logically arranged therapeutic systems. This symbiosis optimizes the individual work processes, reduces treatment time and improves patient service considerably.

The new blueSKY implant system has been developed further on the basis of the successful SKY system. With blueSKY we offer dentists, implantologists and oral surgeons an innovative implant system with a new design that includes special features such as the coronally structured neck and the etched surface, which take the latest trends in scientific research into consideration. This innovation will ensure success of your implant treatment and hence the satisfaction of your patients.

In this brochure we present you all details of the new blueSKY system and provide you with an insight into the surgical procedure and the prosthetic solutions. The abutment system „One for three“ with just one diameter for three different implant diameters, which already rendered the fabrication of restorations with the SKY implant very simple and reliable, is also the key to producing successful restorations with blueSKY. „One for three“ avoids mixing up and offers utmost reliability. Moreover storage space required for prosthetic components is reduced to one third since one abutment diameter can be used for all implant diameters. This way perfect control and reduction of costs are achieved.

In addition to the titanium implant systems SKY and blueSKY the innovative zirconium oxide implant whiteSKY is available for special indications; thanks to its unique material properties, this implant meets highest esthetic requirements and the wish of numerous patients for metal-free restorations. There is also a separate brochure available for this product, which includes detailed information on the advantages of the system for patients.

The SKY OP-Tray can be used for inserting the titanium implants and the whiteSKY zirconium implant as well. As a result, work processes in the dental practice are simplified, process stability of the practice team is increased and, consequently, cost and time of treatment are reduced significantly.

Yours truly

A handwritten signature in black ink that reads "Peter Brehm". The signature is written in a cursive, flowing style.

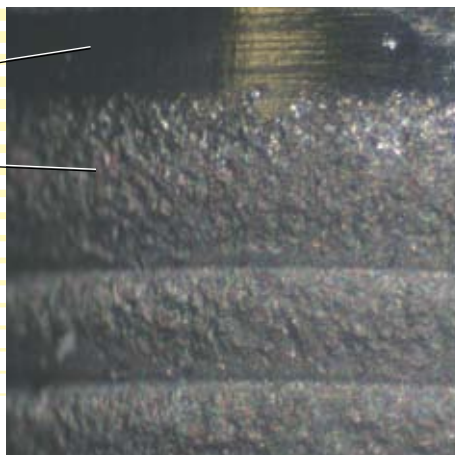
Peter Brehm

The SKY titanium implant systems at a glance

- ▶ Coronally structured neck of 0.5 mm for flush placement with the bone. Stabilization of the bone at a high level and avoidance of bone loss
- ▶ Sandblasted and etched **osseo connect (ocs[®])** surface with macro- and microstructures ensures perfect apposition of osteoblasts
- ▶ Special Torx[®] for optimal implant-abutment connection ensures perfect fit and reduced rotation
- ▶ Surgically and prosthetically optimized
- ▶ „One for three“ abutment system with a single diameter for three different implant diameters



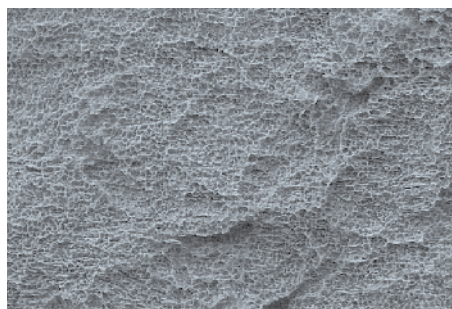
The suitable surface for any indication



blueSKY - coronally structured

The tripolar design of the coronal section in which the machined section leads into the sandblasted and high temperature-etched osseo connect surface via a narrow area that is only etched, provides perfect conditions for both the gingiva and the bone.

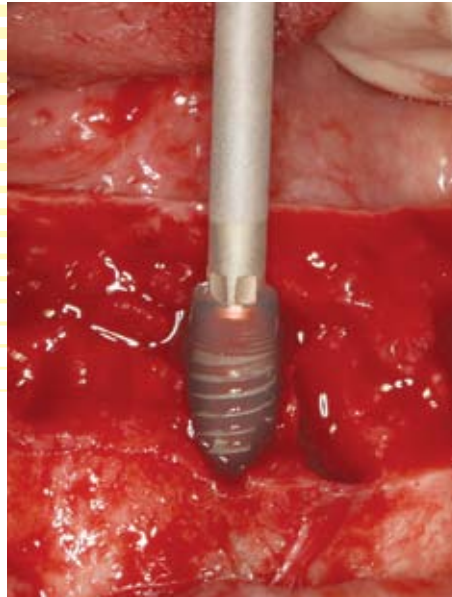
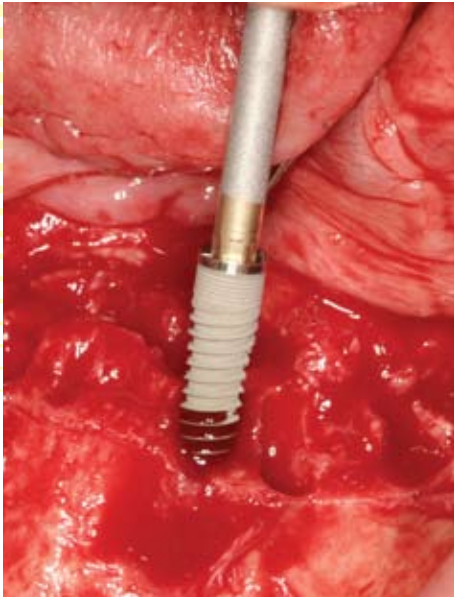
- The soft tissue (gingiva) adapts perfectly to the machined horizontal grooves
- The bone is preserved at a high level, which is supported by the microgrooves.



The modern *osseo connect* surface (*ocs*®)

The newly developed microstructured *osseo connect* surface (*ocs*®) provides excellent preconditions for the apposition of osteoblasts. These uniform microstructures are created by a special combination of sandblasting with large-size particles and etching at high temperatures.

Excellent hydrophilic properties



The hydrophilic properties of a surface are reliable scientific indicators for the ability of bone apposition to a surface. The hydrophilicity of the blueSKY implant ensures that blood will cover the entire implant surface almost immediately after the first contact.



The contact angle of the *osseo connect (ocs®)* which is considerably more obtuse than those of competitors' products confirm the results obtained in clinical tests.

Ultra-modern implant design with osseo connect (ocs®) surface for high primary stability and long-term success of implant placement

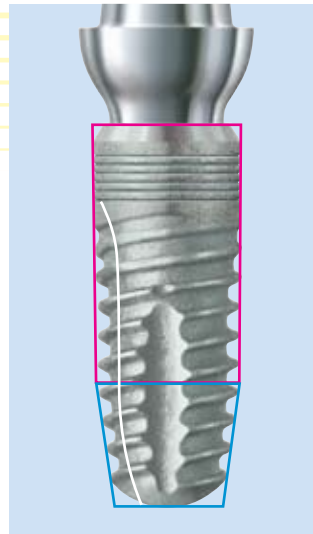
Conical-cylindrical implant shape

Fast and atraumatic

The double thread allows fast and uniform insertion of the implant. No undesired tensile stress is created.

Maximum primary stability

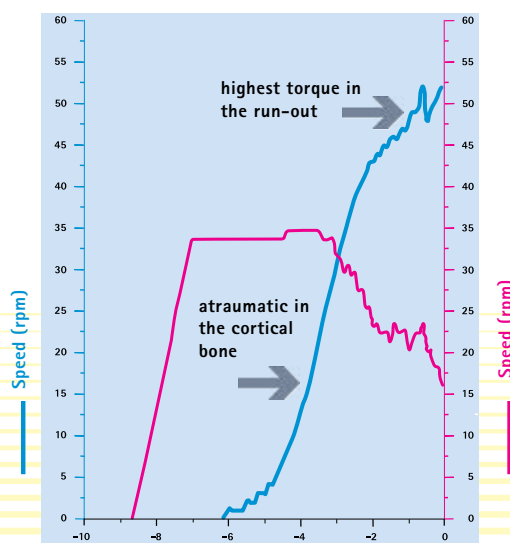
The conical-cylindrical implant shape and the use of suitable drills provide the basis for excellent primary stability.



Double thread

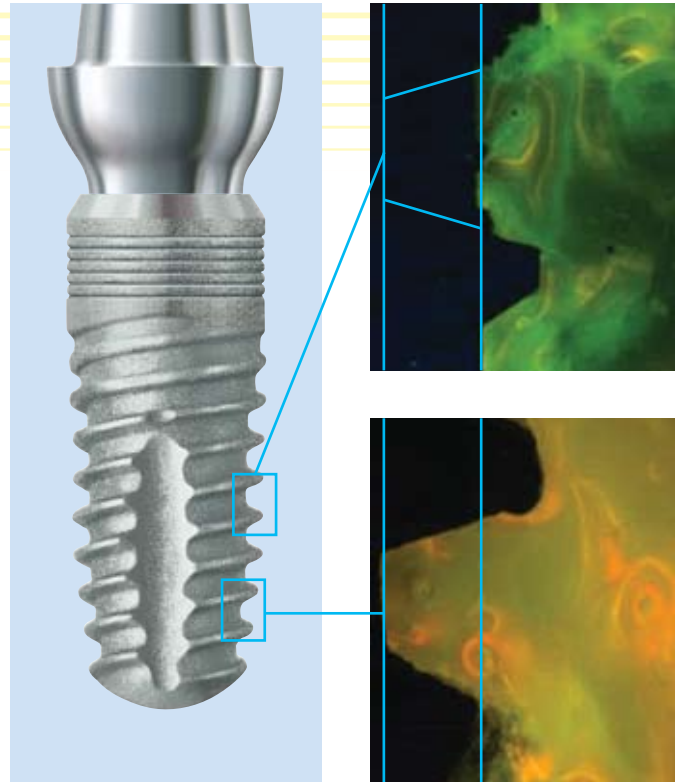


Fast in situ



blueSKY is based on the proven design of the SKY implant and is placed using the same set of instruments.

Compression thread



Improving the bone quality
The bone-quality oriented surgical procedure and the compression thread condense the bone around the implant site and hence increase the primary stability.



Implants and abutments made from titanium grade 4 (cold-worked)

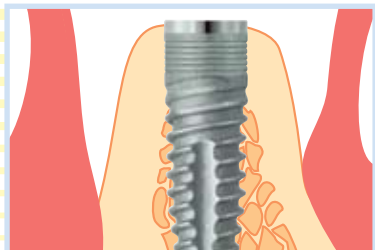
The perfect system

The exceptional properties of titanium grade 4 (cold-worked) form the basis for implants, abutments and screws.

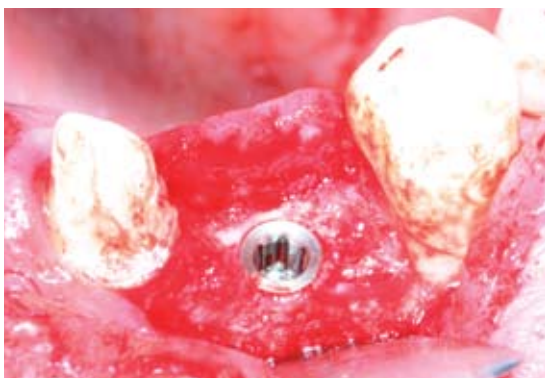
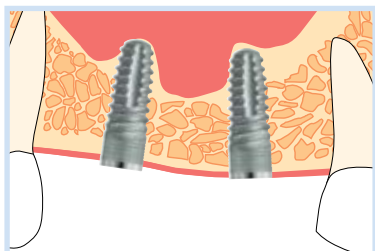
Titanium		Mechanical properties		
Designation	Condition	Tensile strength N/mm ²	0,2% yield limit N/mm ² min.	Elongation at fracture % min.
Grade 2		345	230	20
Grade 3		450	300	18
Grade 4		550	440	15
Grade 4 KV	cold-worked	800-900	> 700	> 10

The perfect implant design for any indication

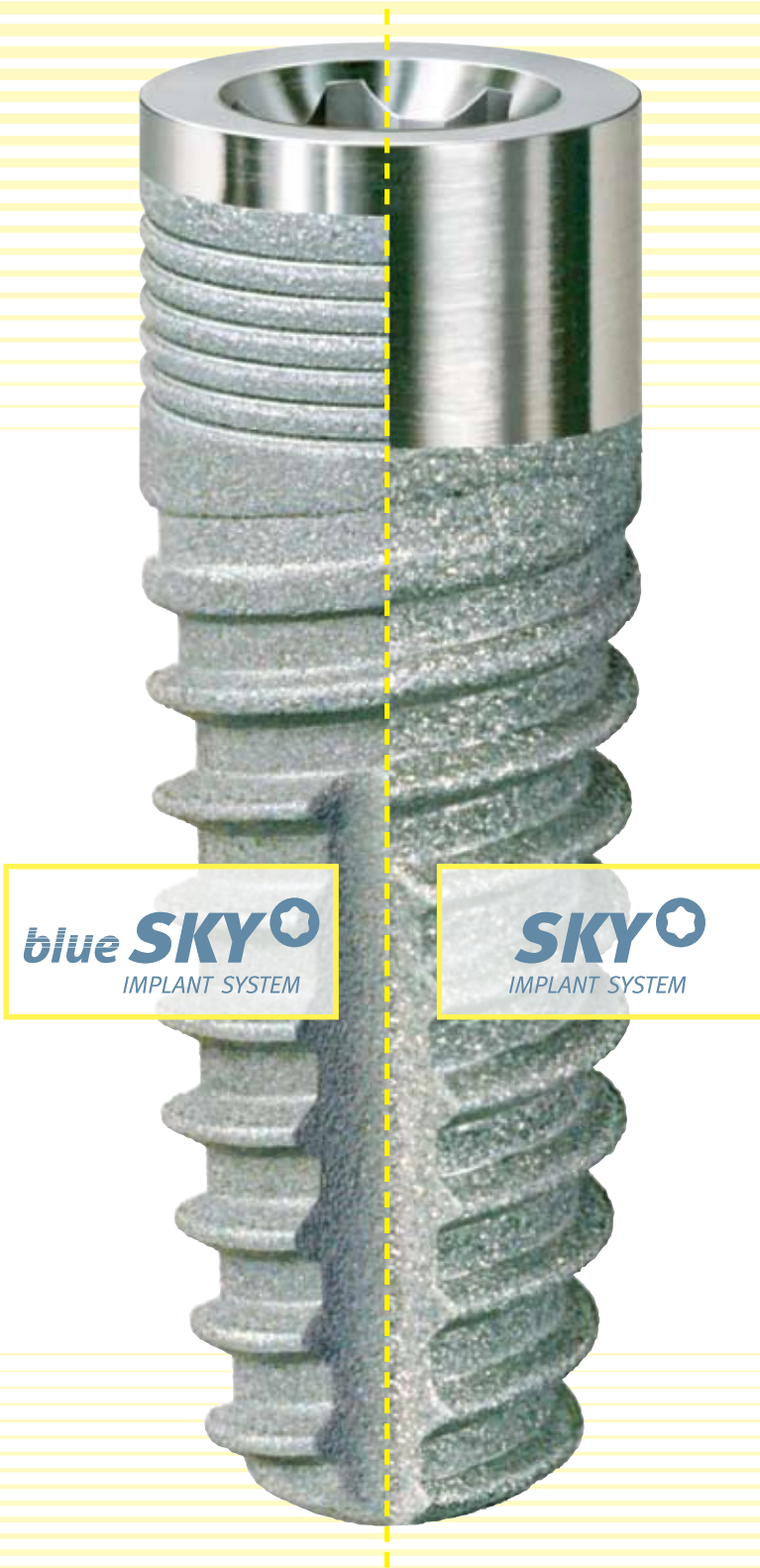
Implant position flush with the bone



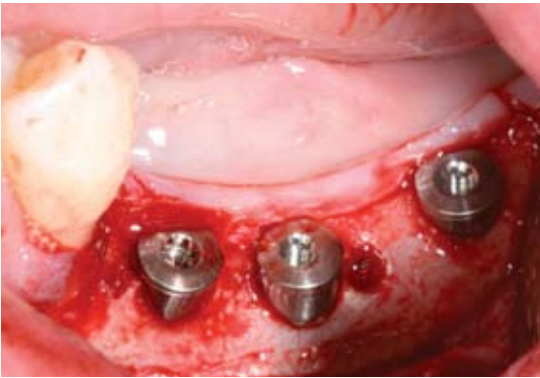
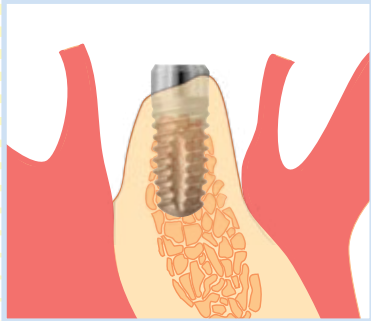
Augmented bone



In this wide bone ridge ideal placement of the blueSKY implant at bone level is possible.



Differences in bone level



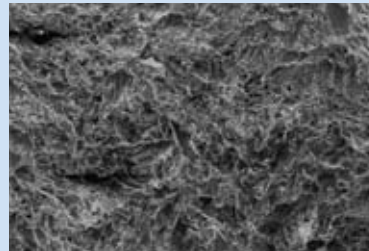
When using the classic SKY implant, the narrow bone ridge does not have to be reduced since perfect adaptation of the gingiva to the machined neck of the implant is ensured.

The high machined neck also offers considerable advantages in cases of inflammation around the implant since it can be cleaned much more easily.

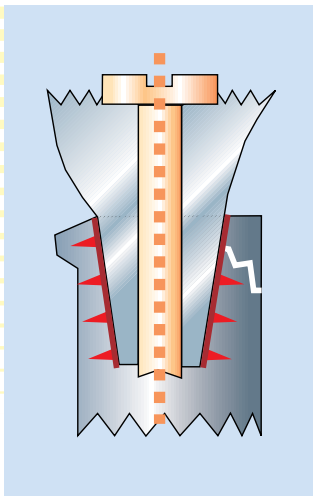
Details of SKY Classic

Unlike the blueSKY implant, the proven SKY Classic implant has a long machined neck. The implant surface is sandblasted.

- machined neck
- sandblasted surface
- self-cutting thread



Connections



Compared to conical connections with press fit, the flat connection with protection against rotations provides major advantages for prosthetic restorations since the vertical height of the abutments is defined, i.e. it is much easier and takes less time

- to integrate the abutments
- to achieve „passive-fit“ for large-size suprastructures



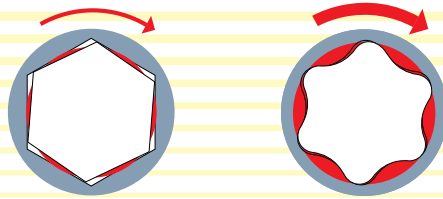
Thanks to the very long tube-in-tube connection (3.5 mm), masticatory forces are directed from the abutment into the implant in a perfect way:

- well-balanced distribution of forces between the internal connection and the implant; hence fracture of screws is avoided
- no notch stress
- no notch stress at the implant neck which may cause fracture of the implant neck under unfavorable conditions

Advantages of the Torx[®]

If screws and screw joints are involved, the Torx[®] is the gold standard in mechanical engineering and the automotive industry and in implant dentistry as well.

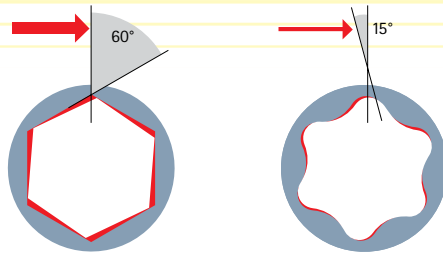
Hexagon:
narrow line application



Torx[®]: has six large force transfer surfaces

- significantly higher torques for the same force applied
- easier insertion of the implant
- no damage to the internal geometry at a high torque either

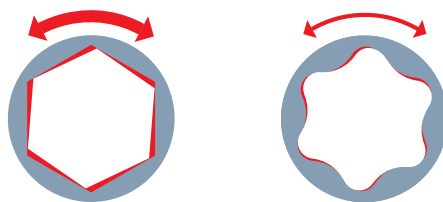
Hexagon:
very high notch stress



Torx[®]: wave profile without sharp edges

- no clamping of the implant and insertion instrument
- no damage to the implant
- extended service life of the implant-abutment connection

Hexagon:
very large tolerance



Torx[®]: has an extremely small tolerance

- clearly improved friction fit
- extended durability of abutment and implant
- reduction of loosening of screws

„One for three“ = high profitability

three diameters



one platform



all prosthetic options with a limited number of components

3.5



4.0



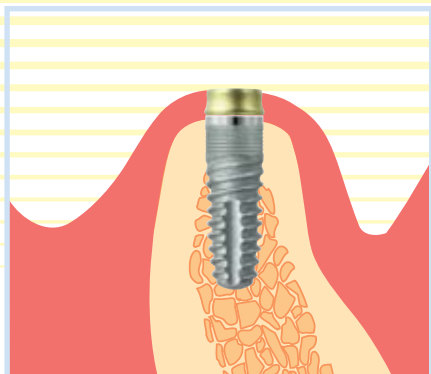
4.5



Complete
Prosthetic assortment

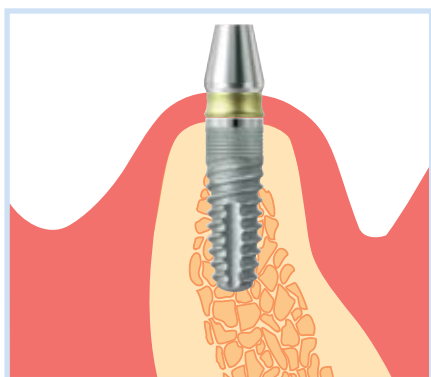
Fewer components thanks to the modular system

The basis of the modular system is the rotation-safe, color-coded spacer sleeve which is available in three heights to compensate different mucosa thicknesses for the gingiva former, bar system and ball head attachment.

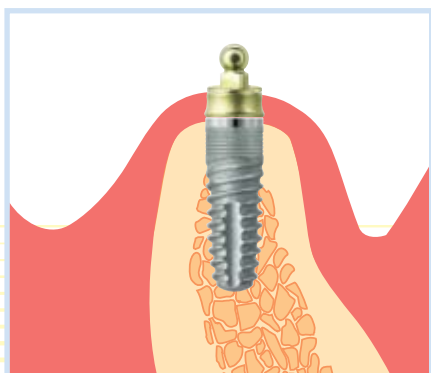


For closed healing, the two-piece rotation-safe gingiva former is inserted after the exposure. The gingiva former also allows trans-gingival healing.

Thanks to the chamfer, perfect adaptation of the gingiva is ensured.



The spacer sleeve of the gingival former is also the basis for bar restorations. The spacer sleeve can remain in the mouth and the adapted gingiva is not harmed.



The same procedure is also used for the ball head attachments.



Five implants – one set of instruments



white
SKY



SKY[®]



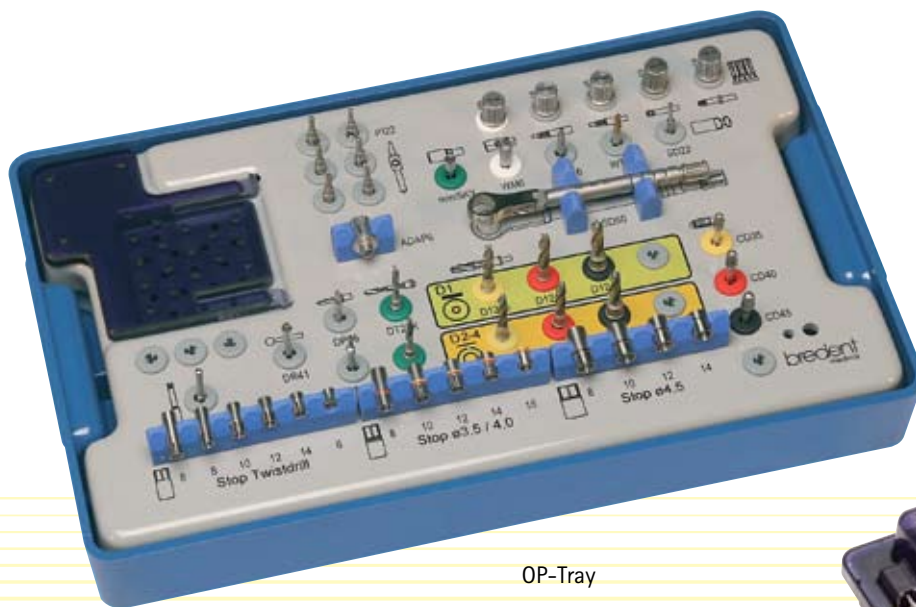
blue **SKY**[®]



mini¹ **SKY**

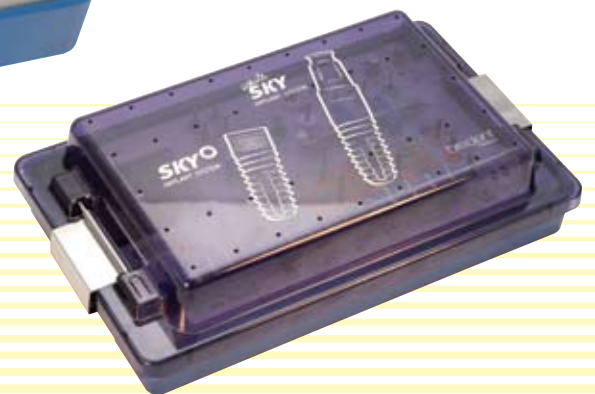


mini² **SKY**



OP-Tray

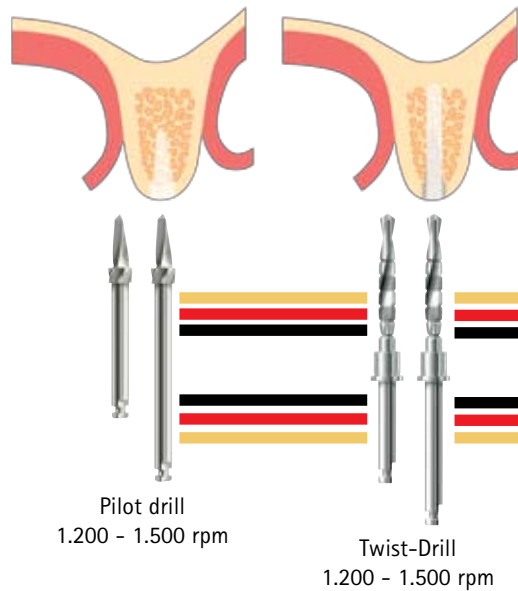
REF SKYXOT21



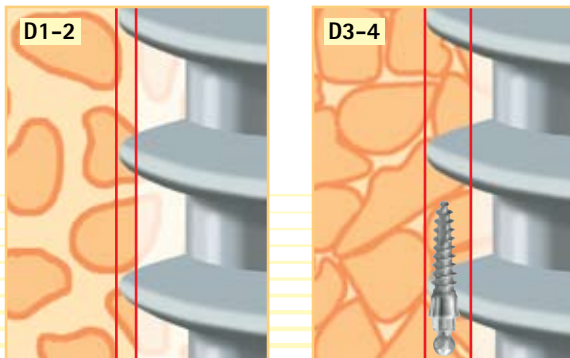


New:

- optimized, bone quality-oriented set of instruments and surgical protocol for unsurpassed primary stability
- Drills with detachable drill stops
- Reduction of the number of drills for increased control and dependability during surgery



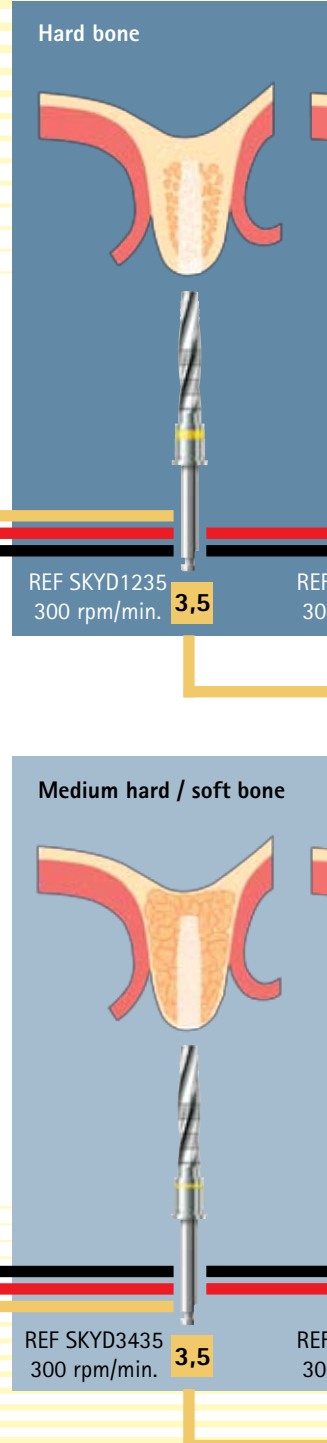
Bone quality-oriented surgical protocol



Atraumatic tapping thanks to reduced contact area

Apical compression thanks to increased contact area

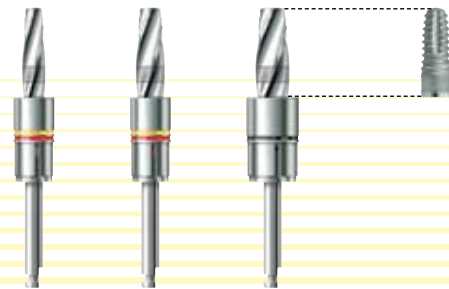
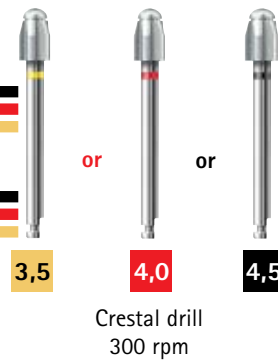
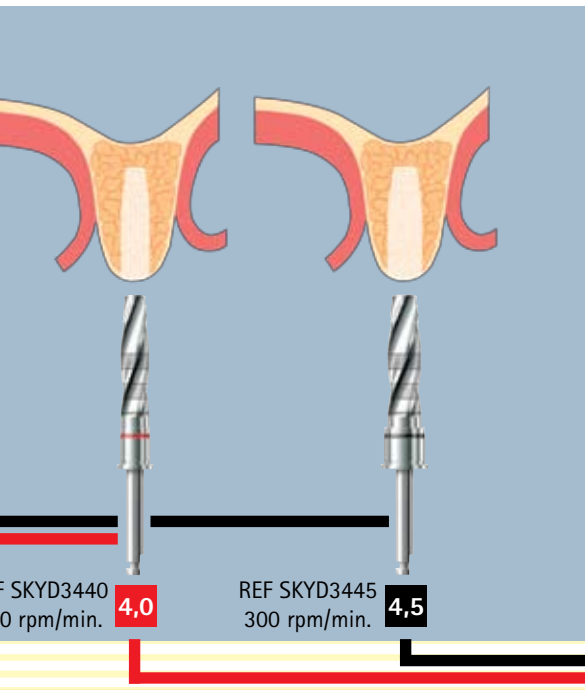
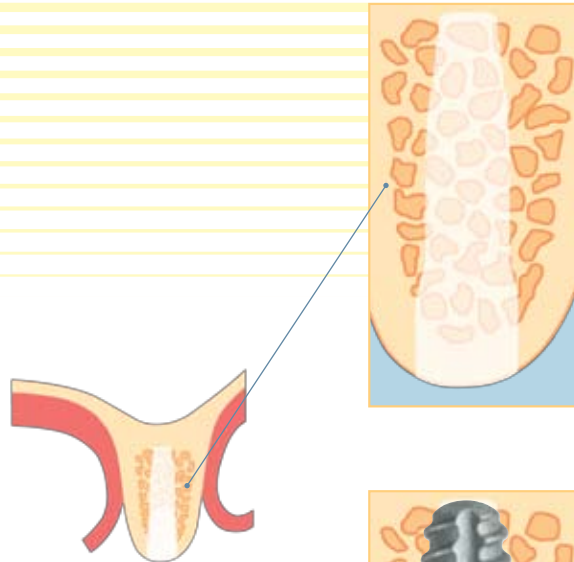
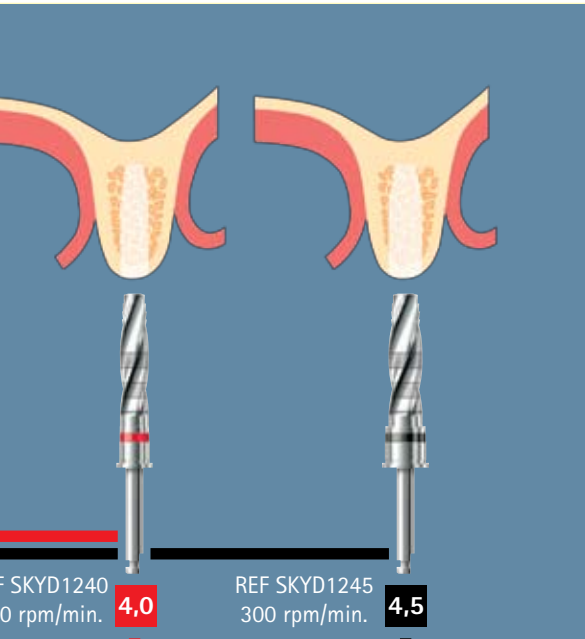
Consistently high primary stability



SKY[⊙]



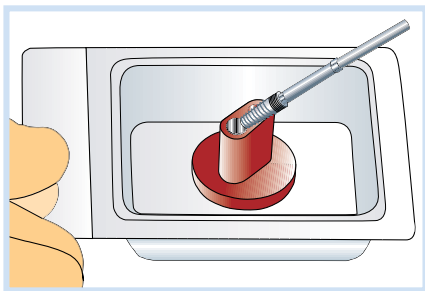
white
SKY



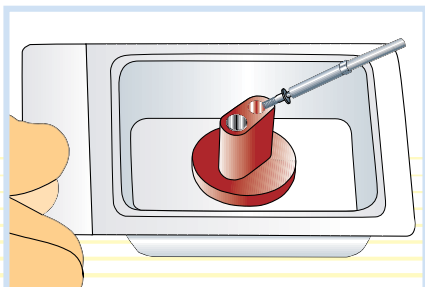
blueSKY – fast, reliable and atraumatic implant placement



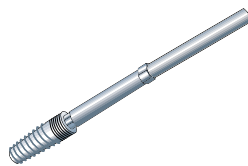
Removing and screwing in the implant and the cover screw without changing instruments.



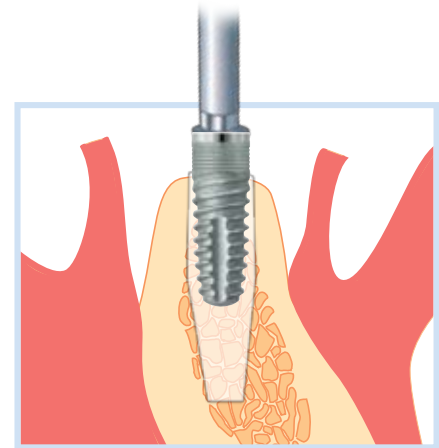
Open the new double sterile packaging. Remove the implant with the insertion instrument for the ratchet or the contra-angle.



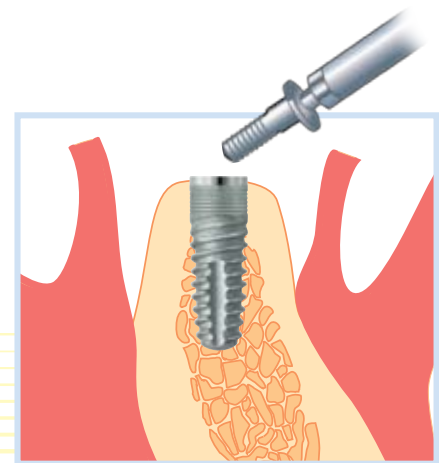
Use the same instrument to remove the cover screw ...



The conical Torx® allows to hold the implant safely.



The implant is inserted and can be screwed in immediately.



... and screw it directly into the implant. Thanks to the smooth cone the screw needs to be only slightly tightened and will not get jammed. Recommended max. torque: 10 Ncm.

blueSKY lengths and diameters

SKY Classic lengths and diameters

Ø 3.5 mm



Length 10 mm	REF bSKY 3510
Length 12 mm	REF bSKY 3512
Length 14 mm	REF bSKY 3514
Length 16 mm	REF bSKY 3516

Ø 3.5 mm



Length 10 mm	REF SKY-3510
Length 12 mm	REF SKY-3512
Length 14 mm	REF SKY-3514
Length 16 mm	REF SKY-3516

Ø 4.0 mm



Length 8 mm	REF bSKY 4008
Length 10 mm	REF bSKY 4010
Length 12 mm	REF bSKY 4012
Length 14 mm	REF bSKY 4014
Length 16 mm	REF bSKY 4016

Ø 4.0 mm



Length 8 mm	REF SKY-4008
Length 10 mm	REF SKY-4010
Length 12 mm	REF SKY-4012
Length 14 mm	REF SKY-4014
Length 16 mm	REF SKY-4016

Ø 4.5 mm



Length 8 mm	REF bSKY 4508
Length 10 mm	REF bSKY 4510
Length 12 mm	REF bSKY 4512
Length 14 mm	REF bSKY 4514

Ø 4.5 mm



Length 8 mm	REF SKY-4508
Length 10 mm	REF SKY-4510
Length 12 mm	REF SKY-4512
Length 14 mm	REF SKY-4514

Three diameters

One platform

Exposure

Ø 3.5



Ø 4.0



Ø 4.5



Impression

closed tray



open tray



implant analog



gingiva former



SKY temp



Perfect prosthetic solutions with just a few components

Titanium abutments (page 23)



Titanium abutments esthetic line (page 24)



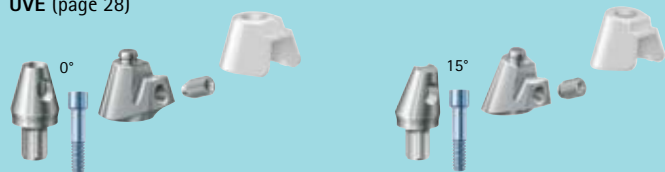
Zirconium abutments (page 25)



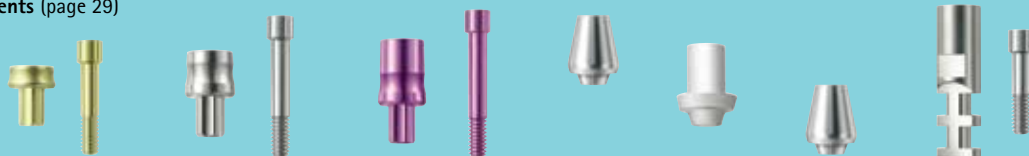
Individual abutments (page 26, 27)



UVE (page 28)



Bar abutments (page 29)



Ball attachments (page 30)



Prefabricated prosthetics (page 31)



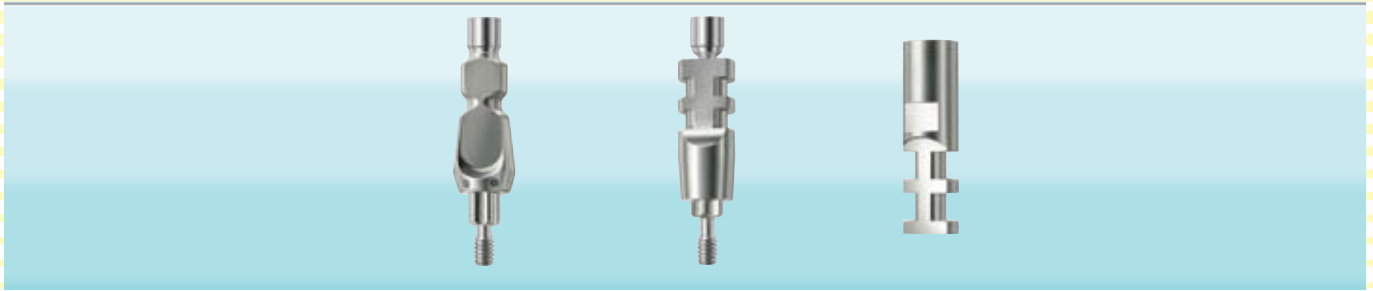
Smiling-Cone



SKY fast & fixed (page 32)



Model fabrication



Description:

The impression abutment for closed impressions with pre-fabricated trays simplifies repositioning thanks to:

- distinctive flat sides
- deep horizontal groove
- deep vertical groove

The impression abutment for open impressions with individual trays excels by:

- distinctive retentions
- short Torx® for divergent implants

The implant analog guarantees precision thanks to

- distinctive retentions
- protection against rotation

Advantages:

- Perfect results both for open and closed impressions



Impression abutment for open impression incl. screw

REF SKY-PA10



Impression abutment for open impression incl. screw

REF SKY-PA20



Implant analog

REF SKY-IA4 0



bredent medical impression material and trays for implantology can be found in the catalogue for dental practices



breciform transparent disposable trays

- ▶ can be individualized
- ▶ stable and ergonomic
- ▶ no time-consuming cleaning

Modular system – Gingiva formers to create the basis for bars and bridges



Description:

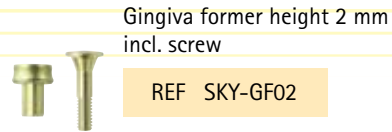
Gingiva formers in 3 distance heights

- 2 mm – yellow
- 4 mm – silver
- 6 mm – red

Can also be used as basis for bar structures or bar attachments. The groove prevents the gingiva former from loosening from the implant when integrating the bar structure.

Advantages:

- Enhanced gingival conditions for bar structures and restorations with ball attachments
- Reduction of the large number of components



Gingiva former height 2 mm
incl. screw

REF SKY-GF02



Gingiva former height 4 mm
incl. screw

REF SKY-GF04



Gingiva former height 6 mm
incl. screw

REF SKY-GF06



Photo: Dr. Borrmann

SKY temp



Description:

The ideal basis for temporary restorations

The demands patients make on implant restorations are constantly increasing. Owing to obligations in their jobs and social lives, numerous patients want to reduce the period of having a gap in their dentition. Temporary restorations are an attractive alternative to achieve this goal. These resin abutments are also perfectly suited for modern implantological concepts such as progressive loading or immediate loading.

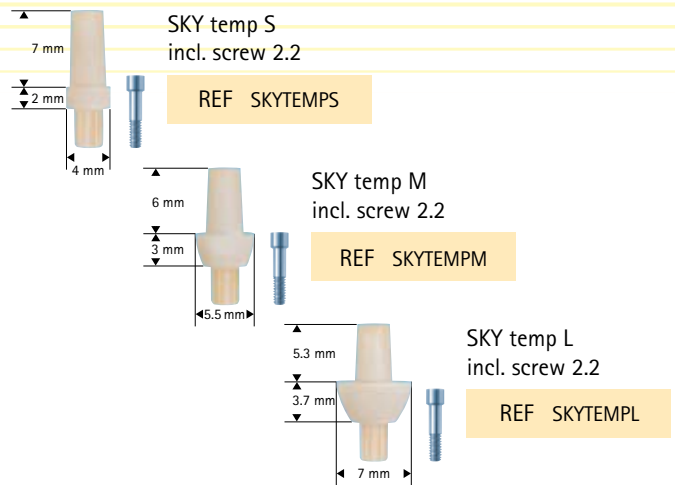
Advantages:

- Perfect contour of the gingiva thanks to three prefabricated designs
- The extra-smooth surface avoids irritation of the gingiva
- Simple and fast fabrication of temporaries

SKY temp - as individual gingiva former

SKY temp is also the perfect basis for individual gingiva formers to fulfil high demands on red/white esthetics.

Clinical case



The use of a bonding agent is sufficient for direct veneering of the SKY temp abutments. The integration of mechanical retentions is not required.



After individualizing the height of the abutment, the restoration is tried in.



The temporary restoration in situ.



Perfectly formed sulcus after removal of the SKY temp.



Unsurpassed red-white esthetics thanks to the use of SKY temp.

Photos:
Dr. Alius, Dr. Gresskovski

Titanium abutments



Description:

Titanium abutment in three designs:

- 0° - straight
- 15° - angled
- 25° - angled

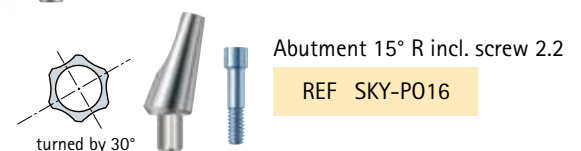
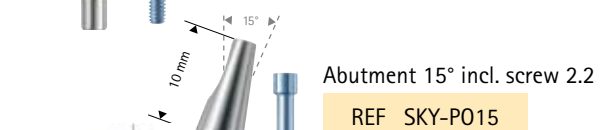
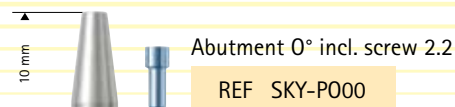
Thanks to the Torx® (R-type) which is turned by 30°, 12 positions are possible for angled abutments.

Advantages:

- Only one abutment for all gingiva heights
- Angled abutments can always be inserted in the correct direction
- Easy to mill

Indications

- ▶ Cemented single tooth
- ▶ Single tooth horizontally screwed with Security-Lock
- ▶ Cemented bridge
- ▶ Bridge horizontally screwed with Security-Lock



SKY selection abutment set

REF SKYASET9

Titanium abutments – SKY esthetic line



Description:

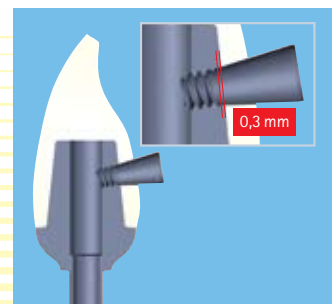
Abutment system with concave and convex design for perfectly esthetic shaping of the crown margin and optimized gingival attachment.

Advantages:

- Perfect esthetics due to very low crown margin
- Optimal gingival attachment thanks to large vertical and horizontal space
- High efficiency thanks to just a few components

Indications

- ▶ Single tooth
- ▶ Bridge



Horizontal fixation of implant-retained restorations using the set of tools for individual screw retention.

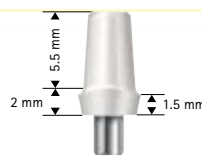
Zirconium abutments



Description:

Prefabricated zirconium abutments with metal base:

- 0° - straight anatomical shoulder
- 15° - angled
- 25° - angled

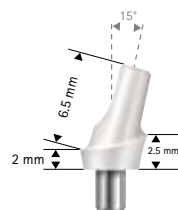


Zirconium abutment 0°
with titanium insert, incl. screw 2.2

REF SKY-CA00

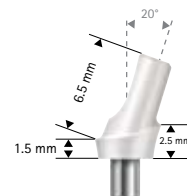
Advantages:

- Unsurpassed esthetics thanks to translucent crowns
- Perfect adaptation of soft tissue
- Considerably reduced plaque accumulation



Zirconium abutment 15°
with titanium insert, incl. screw 2.2

REF SKY-CA15



Zirconium abutment 20°
with titanium insert, incl. screw 2.2

REF SKY-CA20

Indications

- ▶ Cemented single tooth
- ▶ Cemented bridge
- ▶ Bars with zirconium framework



Individual abutments: uni.fit Abutment



Description:

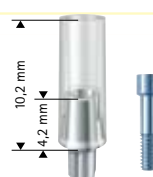
Fast and simple fabrication of laboratory-made individual abutments. Thanks to 1° cone, all surfaces are easy to scan and mill. Modelling the individual abutment with compoForm UV and seracoll UV.

Advantages:

- Can be used with all CAD/CAM systems, copy milling units and casting techniques
- Individual abutments made of zirconium dioxide and titanium can be fabricated

Indications

- ▶ Single tooth
- ▶ Small bridges

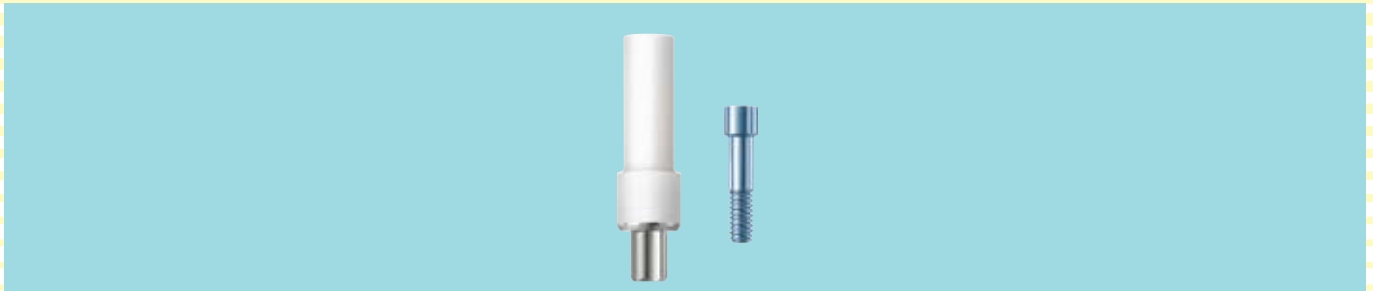


uni-fit Abutment
incl. screw 2.2

REF SKYUFA00



Individual abutments



Description:

Cast-on HL base for the fabrication of individual abutments.

Technical data: Melting range 1400-1490°C
CTE 11,9-12,2 10⁻⁶K⁻¹
(AU 60 %, PD 20 %, PT 19 %, IR 1 %)

Advantages:

- For maximum individuality
- For all difficult cases

Indications

- ▶ Single tooth
- ▶ Bridge



Abutment, cast-on
incl. plastic coping
and screw 2.4

REF SKY-PV00

Screw 2.4
6 pieces

REF SKY-PS22



UVE (Universal Connector Element)



Description:

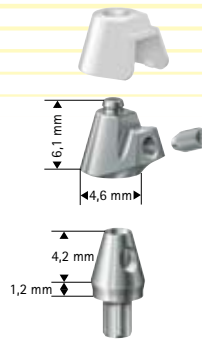
Prefabricated abutment systems for horizontally screwed restorations.

Advantages:

- Utmost precision thanks to industrially prefabricated components
- Suitable for direct veneering

Indications

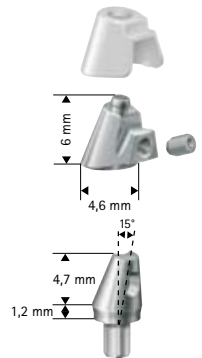
- ▶ Single tooth, horizontally screwed
- ▶ Bridge, horizontally screwed also in combination with other abutments



UVE Set 0° for SKY

UVE abutment
 UVE titanium coping
 Transverse screw 0.9 mm allen*
 modelling component, plastic
 Abutment screw
 1 per box
 for all Ø

REF UV-Y4001



UVE Set 15° for SKY

UVE abutment
 UVE titanium coping
 Transverse screw 0.9 mm allen*
 modelling component, plastic
 Abutment screw
 1 per box
 for all Ø

REF UV-Y4002

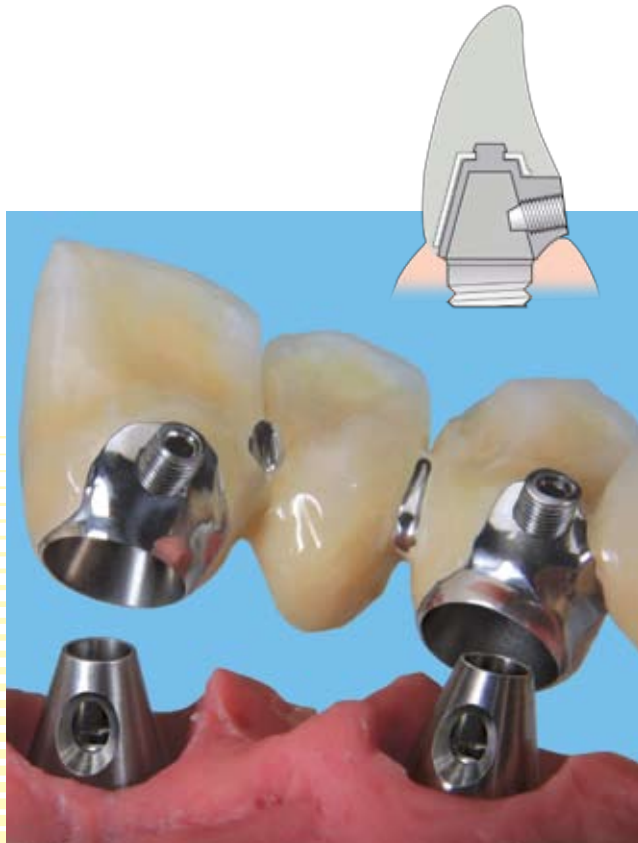
* Accessories for transverse screw:

Screwdriver short
 0.9 mm allen

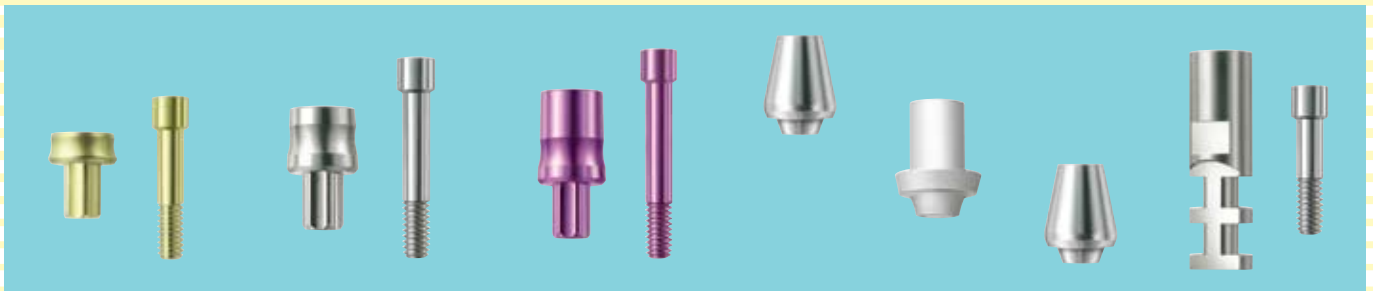
REF 310 00K0 6

Screwdriver for contra-angles short
 0.9 mm allen

REF 310 W0K0 6



Bar abutments



Description:

Based on the titanium gingiva formers, three abutments are available for the fabrication of the bars:

- burn-out base
- cast-on HL base
- titanium base

Advantages:

- Improved soft tissue situation thanks to the use of the gingiva former - healing process is not affected
- High flexibility when selecting materials
- Fewer components, hence more efficient

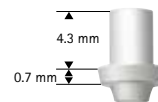
Indication

- ▶ bars



Bar abutment, HL

REF SKY-SH11



Bar abutment, burn-out plastic

REF SKY-SK11



Bar abutment, titanium

REF SKY-ST11



Bar base, height 2 mm

REF SKY-SB02



Bar base, height 4 mm

REF SKY-SB04



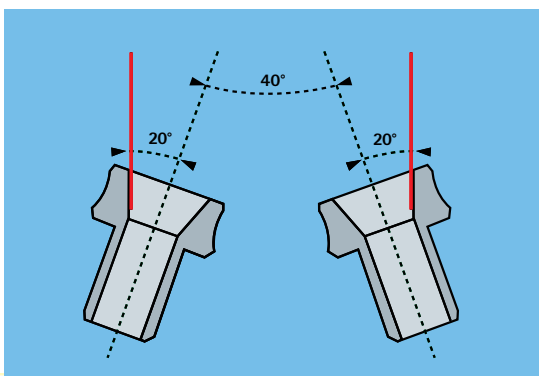
Bar base, height 6 mm

REF SKY-SB06



Spacer analog incl. screw 2,4

REF SKY-DA77



Ball attachments



Description:

Based on the gingiva former, the patrx is screwed in after replacing the screw.

Various matrix systems are available:

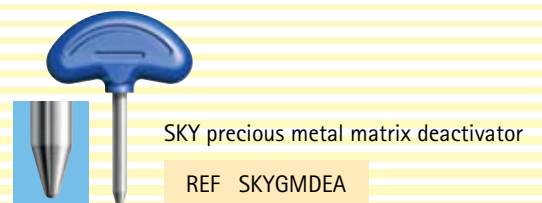
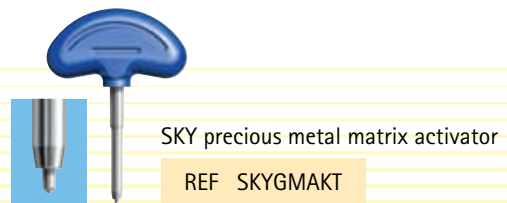
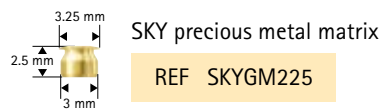
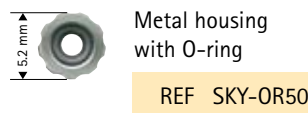
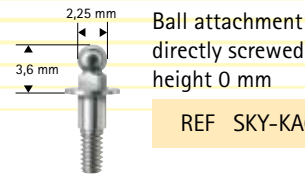
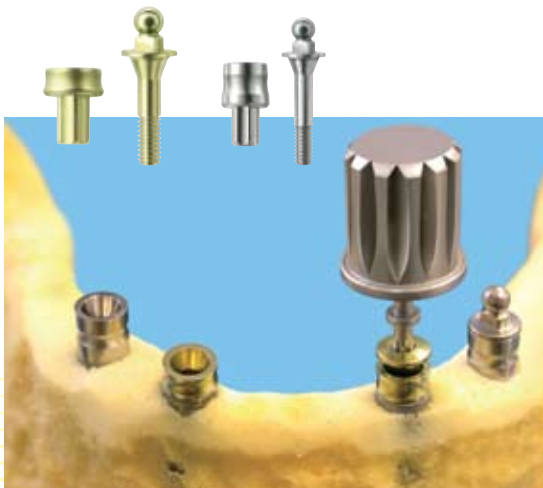
- SKY metal housing with O-ring
- SKY precious metal matrix

Advantages:

- Improved soft tissue situation thanks to the use of the gingiva former - healing process is not affected
- Individually adjustable resilience according to the patient's needs
- Inserts can be easily exchanged

Indication

- ▶ fixation of restorations



Smiling-Cone



Description:

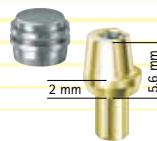
Individual prefabricated conical crown made from titanium. Available in gingiva heights of 2 and 4 mm. Compensates divergences up to 40° for two implants.

Advantages:

- Maximum precision and accuracy
- Simple and safe processing
- Favorably-priced prosthetic restoration
- Easy to clean also for patients with limited manual dexterity
- A simple click fastens the restoration in the mouth

Indications

- ▶ stable fixation of dentures
at least four Smiling-Cones in the lower jaw
at least six Smiling-Cones in the upper jaw
- ▶ removable bridge



Smiling-Cone, titanium, yellow
for SKY implant system
Gingiva height 2 mm
Smiling-Cone cap
Screw SKY-PS22

REF SC-Y4001



Smiling-Cone, titanium
for SKY Implant system
Gingiva height 4 mm
Smiling-Cone cap
Screw SKY-PS22

REF SC-Y4002



Smiling-Cone cap

REF SC-OK403



Compensation of divergence up to 20°

Smiling-Cone conical cap

Smiling-Cone abutment



Fixed bridges for immediate restorations

The age pyramid results in an increasing number of patients with residual teeth exhibiting serious periodontal damage. Unpredictable costs and dentist visits and, above all, the fear of temporary edentulousness frequently avoid implant placement. The use of SKY fast & fixed enables the implantological team consisting of the surgeon and the dental technician to treat these patients with fixed restoration within a few hours. Just a single surgical intervention at a calculable price and an immediate bridge restoration – a therapy not only for persons who are only able to do without a functional and esthetic restoration for a short time due to their position in public life.

With SKY fast & fixed bredent medical offers a surgical/prosthetic system solution

- **Immediate loading**
Suitable abutments allow quick and standardized procedures - for surgery as well as for prosthetics.
- **Use of the local bone**
Due to angular placement of implants optimum use of the local bone is ensured and complex surgical measures involving augmentation procedures are avoided.
- **The bredent symbiosis**
Perfectly matched consumables ensure trouble-free workflow in the laboratory. The visio.lign veneers guarantee an appealing esthetic result so that patients can frequently recognize an improved situation immediately after surgical treatment.



Oral situation when entering the practice

09:00



Extraction



Implantation

Patient upon leaving the practice on the same day

15:00

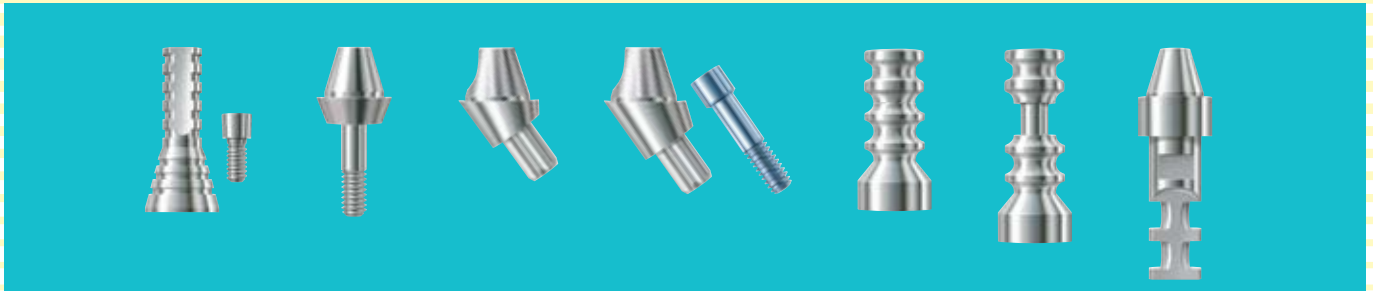


Fixed bridge

Advantages:

- ▶ Posterior support achieved by the inclined implant creates perfect statics for fixed bridges and ensures long-term success of the implant.
- ▶ Scientific studies showed that implants placed in the local bone reveal higher survival rates than augmented implants.
- ▶ Since abutments are placed onto the implants already during surgery, follow-up surgery is avoided - time and money are saved and the strain on patients is reduced.
- ▶ The immediately integrated fixed bridge reduces the amount of work for the dental team during the healing phase since wound dehiscences and pressure sores are avoided.
- ▶ The good quality of the temporary restoration prolongs the time for the definitive restoration for the patient and the implantological/dental team. The positive results contribute to the fact that patients are more willing to select high-quality solutions.

Abutments and copings



Description:

SKY fast & fixed prosthetic coping

The SKY fast & fixed prosthetic coping forms the basis for fast and reliable fabrication of the temporary bridge which is screwed occlusally using the SKY fast & fixed Abutments.

SKY fast & fixed Abutments

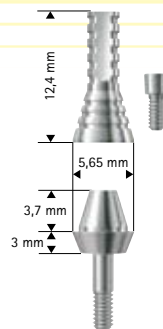
The 35° angled abutments compensate the divergence of implants in inclined positions. They are available in 2 gingiva heights.

The one-piece straight abutment is directly screwed in the implant. All abutments feature the same cone which can compensate divergences up to 10°.

SKY fast & fixed impression

When using SKY fast & fixed, the impression is taken at the height of the abutments. For temporary restorations a SKY fast & fixed impression abutment is available for closed trays; the corresponding laboratory analog is also available.

Detailed info can be found in the SKY fast & fixed Manual.



SKY f & f prosthetic coping, titanium
with screw M 1.4
1 piece each

REF SKYFFPKT

SKY f & f abutment 0° DH 2 mm
with integrated screw
1 piece each

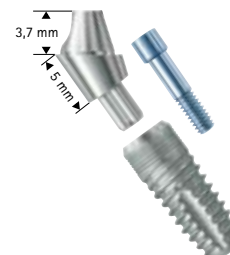
REF SKYFF002



SKY f & f abutment 35° DH 4 mm
incl. screw 2.2
1 piece each

REF SKYFF354

blueSKY

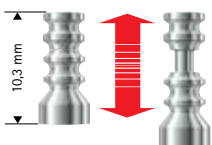


SKY f & f abutment 35° DH 5 mm
incl. screw 2.2
1 piece each

REF SKYFF355

blueSKY

Impression and model fabrication



SKY f & f impression coping
with integrated screw

REF SKYFFOAK

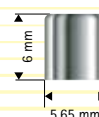


SKY f & f laboratory analog

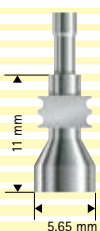
REF SKYFFOLA

SKY f & f Gingiva former

REF SKYFFGF2



Definitive Versorgung



SKY f & f Impression coping open tray

REF SKYFFAOL



SKY f & f Prosthetic coping Resin burn-out

REF SKYFFPKK

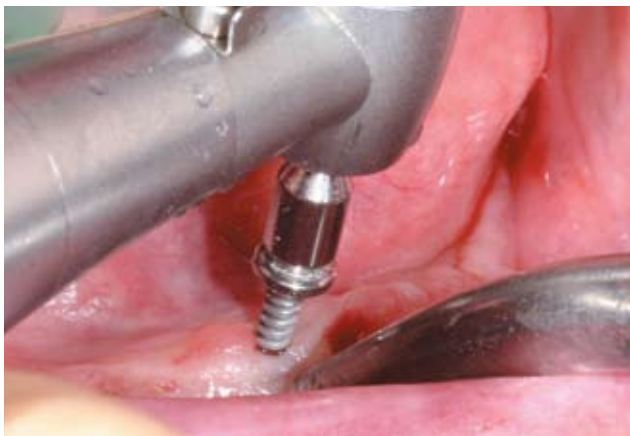


SKY f & f Prosthetic coping HSL cast-on

REF SKYFFPKH

Implant planning – safe and precise transfer

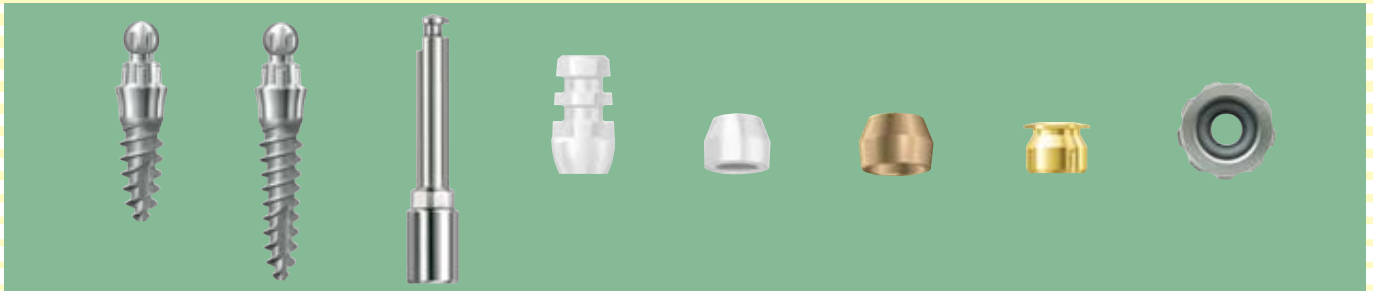
Reliable fixation of the scan and drilling templates in situ is a key prerequisite for precise transfer of 3D implant planning from the PC to the mouth of the patient. Bone-supported drilling templates are expensive and cause major trauma owing to extensive flap procedures. Precision, in particular in the edentulous ridge, is considerably limited when using mucosa-supported templates.



bredent medical offers the perfect solution with miniSKY-FRP. With 3 mini'SKY planning implants you create the optimal basis for

- ▶ reliable and stable fixation of the scan template so that any problems during CT or DVT scans are eliminated.
- ▶ safe and stable fixation of the drilling template to avoid any errors during placement of the implants.
- ▶ Additionally, the mini'SKY planning implants can also be used to support the denture during the preparatory phase of implant placement.

mini'SKY-FRP



This is all you need:

Implants

The mini1SKY implants in lengths of 6 and 10 mm can be inserted in a stable position in every bone type.

Surgery

After predrilling the cavity with the Twistdrill from the SKY surgical tray, the implants are inserted with the insertion instrument.

Impression and model fabrication

The impression coping is only clipped open for the impression. The large retentions ensure safe hold in the tray.

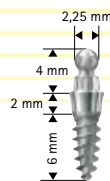
The implant analog is „clipped“ into the impression coping and the model is fabricated.

Scan and drilling templates

Safe and precise fixation of scan and drilling templates is achieved with the planning matrix.

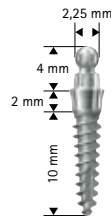
Temporary restoration

During the planning phase, the denture can be stabilized with the SKY precious metal matrix or the SKY O-ring.



mini'SKY
Ø 2,8 mm L 6 mm

REF m1SKYL06



mini'SKY
Ø 2,8 mm L 10 mm

REF m1SKYL10



mini'SKY
Insertion instrument contra-angles

REF mSKYXWM6



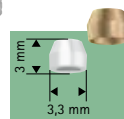
mini'SKY
Impression coping

REF mSKYPA0



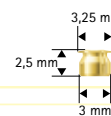
mini'SKY
Implant analog

REF m1SKYXIA



mini'SKY Planning matrix white
3 pieces

REF m1SKYPLM



SKY
Precious metal matrix

REF SKYGM225

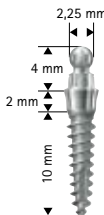
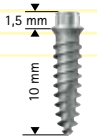


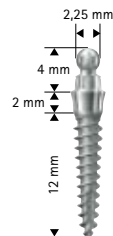
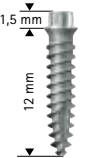
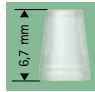
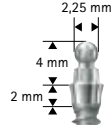
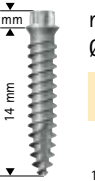


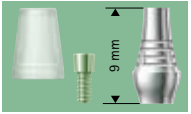



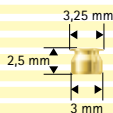


SKY O-ring with metal
housing

REF SKY-OR50

miniSKY – implants with reduced diameters



 <p>miniSKY Ø 2,8 mm L 10 mm REF m1SKYL10</p>	 <p>mini²SKY Ø 2,8 mm L 10 mm REF m2SKYL10</p>	 <p>miniSKY Insertion instrument contra-angles REF mSKYXWM6</p>  <p>miniSKY Impression abutment REF mSKYXPAO</p>
 <p>miniSKY Ø 2,8 mm L 12 mm REF m1SKYL12</p>	 <p>mini²SKY Ø 2,8 mm L 12 mm REF m2SKYL12</p>	 <p>miniSKY prosthetic coping for MD-abutment REF mSKYPKMD</p>
 <p>miniSKY Ø 2,8 mm L 14 mm REF m1SKYL14</p>	 <p>mini²SKY Ø 2,8 mm L 14 mm REF m2SKYL14</p>	 <p>mini²SKY Implant analog REF m2SKYXIA</p>
 <p>miniSKY Implant analog REF m1SKYXIA</p>	 <p>mini²SKY MD-Abutment, titanium REF m2SKYMDT</p>	 <p>mini²SKY MD-Abutment BioXS REF m2SKYMDB</p>
 <p>miniSKY MD-Abutment, titanium REF m1SKYMDT</p>	 <p>miniSKY MD-Abutment BioXS REF m1SKYMDB</p>	 <p>SKY Precious metal matrix REF SKYGM225</p>

OP-Tray Instruments



S = 1:1

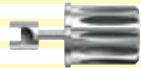
REF SKY-PI22

Parallel indicator with conical and cylindrical side, thicker central area with hole for protection against accidental dropping



REF SKY-SD22

Key with contra-angle collet for all fixation screws



REF SKY-SD21

Key for ball abutments



REF SKY-SD16

Short prosthetic key for all fixation screws



REF SKY-SD25

Long prosthetic key for fixation screws



REF SKY-SD10



REF SKY-SD20

Star-Driver, short and long can be attached onto the insertion abutment



REF SKY-STK6

long **SKY TK mounter for ratchet**



REF SKY-STK5

short



REF SKY-WTK6

long **SKY TK mounter for contra-angle**



REF SKY-WTK5

short

Implant insertion instruments

Instruments

S = 1:2



REF SKY-SD40

Surgical ratchet

Finger key with ratchet function and attachable, movable handle. Can be directly attached onto the Star-Driver.



REF SKY-SD50

Torque ratchet

Adjustable from 10 to 30 Ncm. Is directly attached onto the key.

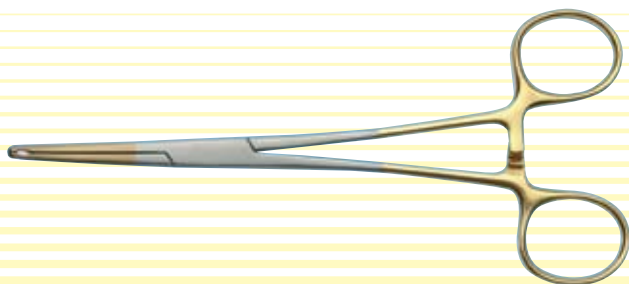


REF SKY-SD80

Laboratory handle

incl. **SD-22** High-grip tool for the laboratory. One working end for contra-angle instruments or square tap.

The other end corresponds to SD-21 for screwing in ball abutments.



REF SKY-SD60

Universal forceps

The universal forceps with titanium-coated gripping surface to hold implants and abutments, also suitable to hold prosthetic keys.



REF SKY-SD65

Key holder

The useful and compact holding tool for all prosthetic instruments.

OPG-ruler



OPG-ruler, 1 piece

REF 580 0127 6

SKY X-ray-templates



Scale 1:1

REF SKY-MS01

Scale 1.12:1

REF SKY-MS12

Scale 1.26:1

REF SKY-MS26

blueSKY X-ray-templates



Scale 1:1

REF BSKYMS01

Scale 1.12:1

REF BSKYMS12

Scale 1.26:1

REF BSKYMS26

Contra-angle

W&H WI-75 E/KM (20:1) distributed by breident medical
Implantology contra-angle.

The contra-angle with hexagon chucking system for perfect transmission of torques.

In future, all tools from breident medical which are exposed to high torques, e.g. insertion tools, will have this hexagon to offer additional reliability.

Contra-angle

REF 580 0505 1



Prosthetic Tray

Solid aluminium box with sliding lid to store and sterilize prosthetic elements and instruments.

Empty tray

REF SKY-PT11



Internet



breident medical in the internet

Since August 2006 breident medical has had a new website in the internet. Clearly structured and easily understandable information on products and ordering for our entire product range is provided at www.breident-medical.com.



As a special service we have integrated the „training“ section with the possibility of direct registration.

Interested dentists are enabled to inform themselves about the course/ workshop of their choice and can immediately register if they intend to participate in this training event.

In addition to the content, there is also a short introduction of the lecturers of our training seminars.



In the press section new products and therapies are presented and already published dental articles of renowned users of our products can be downloaded.

The „Information on ordering“ section includes all the relevant information for placing orders. Currently, an online shop is being created.

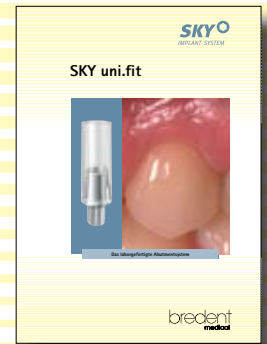
Please request brochures with detailed information!



REF 000 198 GB



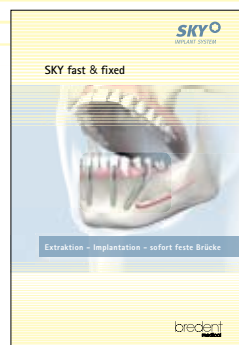
REF 000 267 GB



REF 000 280 GB



REF 000 169 GB



REF 000 200 GB



REF 000 298 GB



REF 000 343 GB

bredent
medical

bredent medical GmbH & Co.KG
Weissenhorner Str. 2 | 89250 Senden | Germany

Tel. (+49) 0 73 09 / 8 72-4 40
Fax (+49) 0 73 09 / 8 72-4 44

www.bredent-medical.com
e-mail info-medical@bredent.com

